

GATEHOUSE OF FLEET GALA

1 – 8 August 2021

EIGHT DAYS of ACTIVITIES & FUN-FILLED EVENTS

PROGRAMME still only £1



MESSAGE from GALA CHAIRMAN,

Sara-leigh Cain:

It gives me great pleasure, on behalf of everyone on our Gala committee, to welcome you all – locals and visitors alike – to Gatehouse-of-Fleet Gala 2021.

In some ways, this is a Gala different from any other we have arranged previously. Not only has the spectre of Covid hung over our preparations these past few months, but the final programme is itself impacted by precautions such as they are at the moment and such as—we can't be sure—they may or may not be at the time of the gala!

That said, many of you know by now that Gala week is a major event in the annual calendar of Gatehouse. The pride, pleasure and satisfaction the committee receives from presenting our gala and the enjoyment the community derives from the week's activities, ensure it earns its place in that calendar.

Although our programme is a little simplified this year due to the precautions we have taken to ensure the health and safety of everyone, we are still proud that it contains a combination of both new ideas and proven favourites over the course of the eight days. As always, we try to provide something for everyone.

It would be remiss of me not to express my sincere thanks for the dedication, commitment and hard work of my committee. There's a lot of preparation for such an event as this at the best of times, but this year it has been particularly challenging, so I am anxious to say thank-you to all the members for their unstinting support throughout the year. Of course, the success of our gala every year is also due to you, the wider community, tourists and residents alike. Each year, so many of you turn out to pull together, offering your time and expertise to ensure each gala is as memorable as the one before it.

I hope you all have a lovely gala week and that we can enjoy good weather, and I look forward to seeing you at some point over the course of the eight days!

Sara-leigh Cain, Chairperson.

As this programme goes to press, due to the changing nature of national restrictions, we advise you to please keep checking the Gala website www.gatehousegala.co.uk and/or our Facebook page before and during the week for up-to-date details and information. Some facilities and services included in the programme may not be available as listed, for which we can only apologise.

Raffle prize-winner results will also be posted on the site at the earliest opportunity after the Grand Raffle is drawn on Gala Day afternoon.

Staying safe

The Gala committee hopes everyone will enjoy the week's activities and have a lovely time. It also wishes to emphasise its awareness of the current situation with regard to Covid-19. Everything prepared for the week's activities has been done with the safety of everyone in mind. We want to ensure a safe and healthy environment at all times. Equally, we hope that everyone involved will be fully aware of, and will abide by, the latest national advice and restrictions.

We are organising 'hand-sanitation stations' at various locations and times around the town and ask everyone participating in the week's activities to use these facilities and to ensure they are wearing face masks and abiding by social distance rules where required to by national advice.

Please play your part in helping us all to stay safe - at all times - and to enjoy our week. Thank you.

Some Gala venues in Gatehouse of Fleet 2021

Our Gala is one of the highlights of our community's year. It is an opportunity for both locals and visitors to participate in a variety of events and activities and to enjoy the lovely surroundings with which we are blessed.

We particularly hope that the Gala is an opportunity in which visitors can feel welcome and, in particular, welcome to participate.

For those not familiar with the local area, the following locations descriptions of venues key to the gala week may help:

Garries Park is located behind the houses on the south side of the High Street (the car park side). Entrance to the park is either through the car park, or at the top of Ann Street, or through the arch mid-way up the High Street;

The **Community Centre** is located in Dromore Road, about 150 metres beyond (north from) the Ship Hotel;

The **tennis court** is about 200 metres along the road north from the war memorial; Entrance to the **golf course** is adjacent to the tennis court, as above;

The **Cally Gardens** are located approximately a half-mile down Cally Drive which is itself entered through the stone driveway entrance posts to the east of the town (beyond the war memorial). Turn first right as you climb the hill out of the town and enter the long, straight Drive.



We are extremely proud to support Gala Week 2021.

Why not pop in for a coffee, cake, light lunch or to find that perfect gift?

Open Every Day of Gala Week.

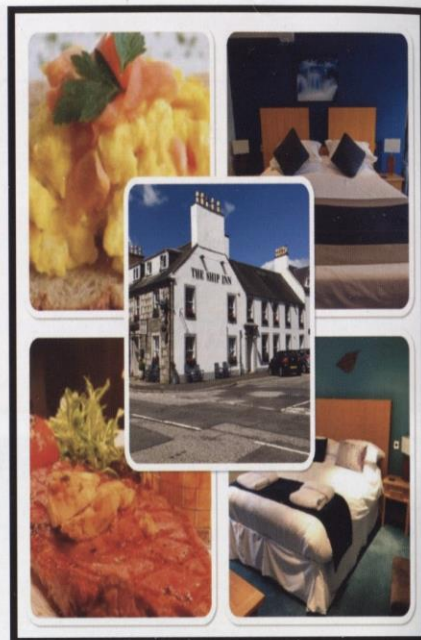
The Wee Pottery
KIRKCUDBRIGHT



Choose from a wide selection of blank pottery, then paint and decorate your piece using stamps, sponges, shape tools and much much more!

Paint your own pottery f @

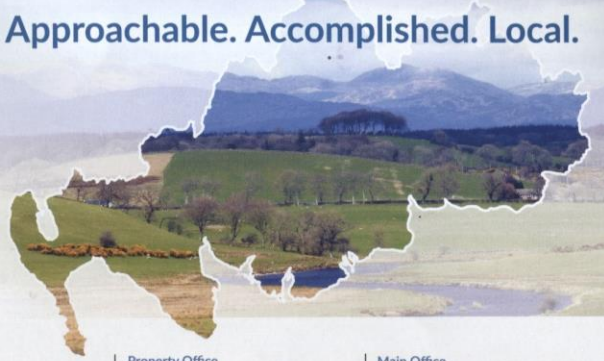
Booking essential: 01557 337216
Jubilee Centre, 10 Mary Street, Kirkcudbright, Dumfries & Galloway DG6 4EG
enquiries@theweepottery.co.uk
www.theweepottery.co.uk



W & H
WILLIAMSON & HENRY
Solicitors & Estate Agents

www.williamsonandhenry.co.uk

Approachable. Accomplished. Local.



Property Sale & Purchase
Estate Agency
Estate Planning Advice
Farm Purchase & Sale
Partnerships
Wills Trusts & Executries
Leasing
Power of Attorney
Forestry Purchase & Sale
Servitudes & Wayleaves

Property Office
3 St Cuthbert Street, Kirkcudbright, DG6 4DJ
Tel: 01557 331049
Opening Hours:
Mon-Fr 9.30am-5pm Sat 9.45am-1pm

Main Office
13 St Mary Street, Kirkcudbright, DG6 4AA
Tel: 01557 330 692
Opening Hours:
Mon-Fr 9.30am-5pm

SPC SCOTLAND
dgspc PrimeLocation.com Zoopla rightmove find your happy SCOTTISH BUILDING SOCIETY



Above: Our Office Bearers for last (2020) year (left to right): **Ayden Dickie, Consort; Morgan Vallance, Queen; Abby Willox, Attendant and Martin Swan, Page.**



Left: Our Office Bearers this year (top to bottom): **Eliza Scott, Queen; Jack Hutchison, Consort; Elliott Henderson, Page and Iona Swan, Attendant.**

Prizes Prizes Prizes

Scarecrow and Decorated Fork or Spade Competitions!



Get your entries for these competitions complete and set out on display in your gardens by **12noon on Monday 2nd August.** Judging takes place that same afternoon.
Phone 07850 773181 to enter

Big Cash Prizes

Gatehouse Store

.....
licensed

Open Daily:

Mon-Sat 7am-6pm

Sun 8am-5pm

POST
OFFICE

01557 814783 / 814811

Wishing Gatehouse Gala 2019 every success

Footprints Podiatry 01557 814999

www.footprintspodiatry.co.uk



David Proudlock JOINER

66 High Street, Gatehouse of Fleet
Tel/Fax: 01557 815042 Mobile: 0771 315 6749

uPVC Windows & Doors • Kitchens
Bathrooms • New Builds • Roofs
Extensions • Loft Conversions etc.

NO JOB TOO BIG OR TOO SMALL



J. N. Pickthall & Sons

Builder & Joinery Contractors

9 Ramsey Wood,
Gatehouse of Fleet DG7 2HJ

Tel / Fax 01557 814452

Mobile 07752755150



www.fleet-fish.co.uk

**FLEET
FISH** LTD

Fresh fish, fruit and
vegetables

Gatehouse Spar
Car park

Every Friday
11.30am to 3pm

HOT TUB
BREAKS
AVAILABLE!

Clauchan
Holiday Cottages

Offering you a warm welcome to a
relaxing holiday in rural Galloway.

5 properties sleeping 1-6 people, with
individual pet enclosures and secure
bike storage, and stunning views of the
Girthon valley and beyond.

www.clauchanholidays.co.uk
Tel: 01557 814259

SUNDAY 1st AUGUST

SUNDAY 1

- 1 pm: 'Table top' sale and refreshments are available in one of the marquees in Garries park for the duration of the afternoon.
- 1.50pm: The **Gala Queen Parade** starts at the Murray Arms Hotel in Ann Street (at the clock tower), and you're welcome to join the queen and her entourage on their walk to **Garries Park**. This year's Queen is **Eliza Scott** and she is supported by her Consort **Jack Hutchison**, Attendant **Iona Swan** and Page **Elliott Henderson**. Our Piper will lead the procession.
- 2 pm: **Official opening of Gala 2021**, plus Crowning of the Gala Queen. For your convenience, you should bring your own table and chairs to the park for the afternoon (but tables may still be available to hire. Contact 07857 361995 for details and bookings).
- From 2 pm: **Afternoon of entertainment in Garries Park**—including the announcement of the 2021 **Citizen of the Year**.
- 3-5pm: '**Jesse Garron** entertains' – a real rebel-rousing rock and roller!
- 6pm: **Ecumenical Songs of Praise** with Creetown Silver Band in the Garden opposite the Ship Inn (TBC—please check the website and/or Facebook for details).
- 7pm: **Children's Cycle ride**. Meet at the 'Wheels of Fleet' (adjacent to the Mill on the Fleet).

Gatehouse of Fleet Community Centre

All the team at Gatehouse Community Centre are pleased that the Gala will run again this year to bring pleasure to locals and visitors alike.

We're also very glad to be able to take part in the programme so come along to our pop up café on 5th August to say hello. In the meantime you can catch up on our news on our website

www.gatehouse-community-centre.org.uk

or our Facebook page

www.facebook.com/groups/370041393587994/



CARAVAN & CAMPING PARK WITH
SELF CATERING COTTAGES & LUXURY LODGES



MOSSYARD, GATEHOUSE OF FLEET DG7 2ET
T: 01557 840 226 E: ENQUIRY@MOSSYARD.CO.UK
WWW.MOSSYARD.CO.UK



ENJOY THE GOOD
TIMES AT GATHER
BREAKFAST LUNCH
DINNER CAKE
OUTDOOR NIBBLES

Open daily from 9am!
Book online at www.lagganlife.co.uk/gather



THE MILL ON THE FLEET VISITOR CENTRE

www.millonthefleet.co.uk



Open Daily 10am - 4pm Admission Free

Restored 18th century cotton mill. Exhibitions, Tourist
Information Centre, Bookshop, Regional Arts & Crafts outlet,
Café with riverside terrace

The Mill on the Fleet, Gatehouse of Fleet, DG7 2HS Tel: 01557 814099

MONDAY 2nd AUGUST

MONDAY

9.45am for 10.00am start:

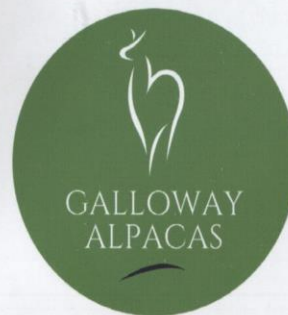
Junior tennis singles (16 and under) at the tennis court
next to the golf course. Entrants must be able to serve.
Entry £1.

10.30am: **Historical Walk** round Gatehouse with Ms Lesley Richmond –
Meet at the main (central) Car Park. Lasts about an hour and
the route keeps within the town.

5.00pm for 5.30pm start:

Adults' doubles tennis tournament at tennis court next to the
golf course. Draw for partners at 5.15pm. 5.30pm start. Entry £2.

7pm: **Car treasure hunt** for the 'Bobby Caig Trophy' This starts at the
Community Centre Car Park in Dromore Road. £5 entry per car.



Come and visit our Alpacas in a
magnificent rural location.

www.gallowayalpacas.com

07598 797 220



THE CRAFTY CROW
CAFE | CRAFTS | GIFTS
HABERDASHERY

Freshly Baked Artisan Pizza
to Dine-in or Takeaway

01557 814000
www.thecraftycrow.co.uk
Rutherford Hall, High Street.
Opposite Car Park Entrance



TUESDAY 3rd AUGUST

TUESDAY

- 10.30am: **Historical Walk** round Gatehouse with Lesley Richmond. Start at the Main Car Park (see yesterday's details).
- 12.30pm: **Family Picnic** in Garries Park – children's magical entertainment with **Franc Karpo** (right) 1.00 – 3.00pm. Bring your own picnic – sorry, but NO unaccompanied children please.
- 6.30pm: **Children's Fun Run** 11 yrs and under. Starting at the Community Centre, the route is up the High street and back. Entry is FREE and it's for fun only! Every runner will receive a medal.
- 7pm: **'ROON THE WATTER' FUN RUN** A 6-mile fun run starting and finishing at the Community centre. Entry is FREE (although donations to the Gala very welcome). The run will be as covid-safe as possible hence no registration, no numbers, and no recorded times. A one-way system to the start, and immediate dispersal after the run will operate. All runners will receive a medal. 1st male & 1st female (only) will receive a trophy.
- 9.30pm: **Quiz Night** in the Masonic Arms in Ann Street. Come along and flex your general knowledge to win a super cash prize!



MURRAY ARMS
HOTEL & RESTAURANT

OPEN EVERY DAY SERVING FOOD 12-2pm & 6pm-9pm
FOOD ALL DAY SUNDAY
SUNDAY LUNCH SPECIALS • KIDS MENU
TEL: 01557 814207

WEDNESDAY 4th AUGUST

WEDNESDAY

- 10.30am: **Historical Walk** round Gatehouse with Lesley Richmond. Assemble at the Main Car Park (see Monday's details).
- 2.00-3.30pm (Tee-off):
'Fox and Rabbit' fun Golf at the course on Laurieston Road (adjacent to the tennis court). Tel 01557 815089 for details. Entrants need to be in pairs; one a 'novice' player (the 'rabbit'), and the other, more experienced player, the 'fox', gives 'chase' round the course.
- 6.00pm: Delicious burgers and hot dogs will be available from the **Gala Barbecue** in the open marquee in **Garries Park** all evening onwards:
- 6.00pm: **Children's pet show** registration in **Garries Park**. Let's see all those pets! There are 1st, 2nd and 3rd prizes for each class. Age groups of animals:
- 6.30pm: The **Amazing Talent Show** in **Garries Park**. Come along and show what you can do!
- 8.00pm: **Pre-Torchlight Entertainment** in **Garries Park** with the Kay Alexander Highland Dancers and Pipers.
- 9.45pm: **Grand Torchlight Procession** from Community Centre in Dromore Road via High Street to **Garries Park** (torches for sale during week in participating shops, price £3.50).
- 10.15pm: Enjoy our **Spectacular Fireworks Display** and **bonfire** in the park.

3 Sumptuous holiday cottages
nestled in 65 acres of relaxation..



★
Grobddale
Of Girthon



www.grobddale.co.uk

THURSDAY 5th AUGUST

THURSDAY

10.30am: **Historical Walk** round Gatehouse with Lesley Richmond, from the Main Car Park.

12.00-2.30pm:

'Pop-Up Pizzas and live music' at the Community Centre car park, Dromore Road/Garden Street. Children's Activity table, plant sale and lots more! This event courtesy of the Community Centre Management Committee.

2pm: **'Family Magical Woodland Adventure'**: Meet at main town car park. Follows Forestry paths. Donations to gala funds welcome.

6pm: **Guided hill walk** for approx. 2.5 hours. See posters for information. Meet at town car park at 5.45pm. Hill-walking attire essential. (Donations to gala funds would be very welcome).

6.00pm: **5-a-side football** for anyone **16 years and under** (i.e. up to 17th birthday) in Garries Park. Teams register 6.00pm. Kick-off: 6.30pm.

9.30pm: Local musicians in session in the Masonic Arms in Ann Street.



SELECT

ELECTRICAL

All types of electrical work undertaken
Domestic - Commercial - Agricultural
Inspection, testing & Certification

SELECT REGISTERED

Contact Darren on: 07746 448 141
Email: daz@bselectrical.net



Luxury 5 Star, 6
berth, dog friendly
accommodation

Laurieston,
Castle Douglas

www.ramerish.co.uk

Telephone:
0751 582 5876

Stanley & Mark Grieve

Joiner
Funeral Director

Quality Service Guaranteed

Workshop & Store

15 Digby St, Gatehouse of Fleet
01557 814066 & 07803 179044

Office & Home

'Carneys' Castramont Road
01557 814 412



Mr & Mrs Jolly (Matthew &
Lesley) and all the staff at
Jollys Funfair would like to
wish all residents and visitors
to Gatehouse a very happy
Gala 2021.

*Jollys Funfair will be open
daily at Garry's Park for
Gala Week 10am – 6pm*

Deliciously Good!

Luxury ice cream made using
100% natural ingredients and
milk from our ethical dairy farm.

Choose your flavours!

Create your perfect ice cream cone by
selecting from more than 20 ice cream flavours
– everything from Luxury Vanilla to Salted
Caramel to refreshing Gooseberry & Elderflower!

Book an event!

Fancy inventing your very own ice cream flavour,
or learning how to make cheese? Events run
each day, advance booking is essential.

We're open daily from 10am-5pm!
www.creamogalloway.co.uk



FRIDAY 6th AUGUST

10.00am-4.00pm:

Open Day at Cally Gardens by courtesy of Kevin
Hughes. Entrance fee in aid of gala funds. Entrance
down the Cally Drive – just follow the signs. Kevin is also
sponsoring the 'Decorated garden fork and spade'
competition.

10.30am: Historical Walk round Gatehouse with Lesley Richmond,
starting at the Main Car Park.

6.00pm: Walking treasure hunt starting from the Community Centre:
Car Park: 50p per person.

6.00pm: Walk to Cally Woods Moat & Bathhouse
with Lesley Richmond. Meet at the central
car park.



FRIDAY



Neil Pickthall

General building, roofing and plastering

01557814781

07801540653

john.pickthall@yahoo.com

Dionard, 6 Boreland Wood

Gatehouse of Fleet

DG7 2EH

C. Kirkpatrick Plumbing & Heating Engineer

Your local, qualified plumbing & heating engineer. Unvented
hot water & oil; and gas for over 30 years.

Mob: 07734247508





Everyone at Gatehouse Community Church and TGB Gatehouse wishes you a great and successful Gala Week. You can find out lots more about us on our websites: gatehousecommunitychurch.co.uk and tgbgatehouse.com. We are also on Facebook. Why not pay a visit to TGB's 'Wee Shop' at No.1 High Street.



With thanks to the Gala Committee for all their hard work.

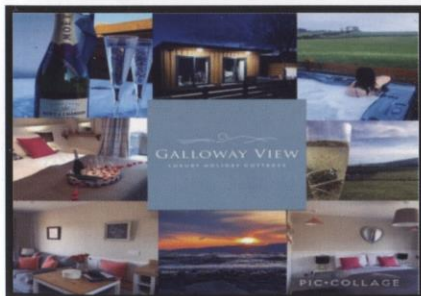
GALA DAY AFTERNOON PROGRAMME IN GARRIES PARK:

ONGOING EVENTS & ACTIVITIES:

- Licensed bar
- Various food outlets:
burgers, hot dogs, chips, hog roast etc.
- Children's games, rides & amusements
- Various stalls and activities

APPROX. SPECIFIC EVENT TIMINGS:

- 1.45: Samba Sisters
- 2.15: Suzi Briggs
- 3.00: Samba Sisters
- 3.15: Baby Show
- 3.40: Suzi Briggs
- 4.15: Tug of War



GATEHOUSE OF FLEET YMCA
Gatehouse of Fleet YMCA is committed to creating opportunities for the emotional, physical, spiritual and social development of local young people of all faiths, and of none. Welcoming from S1 up to 25 years of age the Drop-In has a wide diverse programme every Monday, Wednesday, Friday and the occasional excursion at the weekends. We lead workshops including: Camera Club, Circus Skills, Gym Evenings, Arts and Crafts, Cooking, Volunteering for Saltire Awards, Mural paintings, Cycling, Tennis, Walking, DJ'ing and Games nights or just chilling out with friends.

SATURDAY 7th AUGUST GALA DAY

SATURDAY

10.00am: Open pairs Bowling Competition, Bowling Green, Ann Street. Non-members welcome.

12.30pm: **Assembly and judging** by a visiting holidaymaker of decorated floats and cars (Classes 1 and 2 assemble on Dromore Road, and all entries in Classes 3-6 in the adjacent Community Centre car park).

ALL vehicle Floats receive £50 for entry.

Class 1: Decorated Floats (adults);

Class 2: Decorated Floats (children);

Class 3: Adults' Fancy Dress (walking);

Class 4: Children's Fancy Dress; (walking);

Class 5: Decorated bicycles and prams (adults), and

Class 6: Decorated bicycles and prams (children).

1.15pm: The **Grand Gala Parade** moves off towards Garries Park via Garden Street, High Street and Ann Street—lead by the Gala Queen and her entourage. The parade includes a variety of vehicles, entertainers and participants.



2pm: **Afternoon of entertainment** in Garries Park, starting off with the Parade Competition Results, and during the afternoon, entertainment from the 'Samba Sisters' and also **Suzi Briggs** – stalls, side-shows, refreshments, games, the Baby Show (babies up to 2 years), Alpaca rides round the park – and of course, the legendary Tug of War! (Get your teams organised beforehand – cash prizes to be won!). Gatehouse Licensed bar and much more!

Please see overleaf for event timings for the afternoon.

4.00pm: The **Grand Raffle Prize Draw** in the park (list of all prizewinners will be posted on the gala website – www.gatehousegala.co.uk later in the evening).

9pm: Disco at the Bank of Fleet Hotel. Free admission. Finishes at midnight.

THANKS TO SPONSORS & DONORS:

The Gala Committee wishes to extend sincere thanks to all sponsors and other supporters for their contributions towards our Gala week.

Such support is essential towards making the event a success and we continue to be extremely grateful for it.

Bank of Fleet Hotel



- Ensuite Rooms • Bar Meals
- Restaurant & Beer Garden

01557 814302 • www.bankoffleet.co.uk

Excellent food and a friendly atmosphere



ALL-WEEK ACTIVITIES

HIDDEN OBJECT COMPETITION:

Entry forms from Gatehouse Store.

CHILDREN'S COLOURING COMPETITION

for ages 5-12 years

- collect entry picture from Gatehouse Store.

GATEHOUSE BOWLING CLUB, ANN STREET.

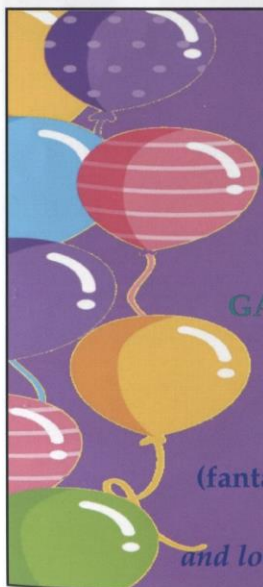
Bowling on Monday, Wednesday & Saturday at 6.30pm. All welcome. Come and have a go!

GRAND PRIZE DRAW RAFFLE

(fantastic prizes, the best yet for Gala week) tickets

£1 each for sale in participating shops -

and look out for the 'pop-up' sales table outside Spar.



SUNDAY 8th AUGUST

From 12 noon:

Duck Race & afternoon of Entertainment in the Gardens opposite the Ship Inn. See website, Facebook and local Posters for more information.

SUNDAY 2



GREAT SELECTION OF
SCOTCH WHISKY, SPIRITS,
REAL ALES & BEERS

PUB & RESTAURANT

SUNROOM & BAR AREA
BEER GARDEN
DOG FRIENDLY

SERVING FOOD:

MONDAY TO FRIDAY
12pm-2.30pm / 6pm-9pm
SATURDAY & SUNDAY
12pm-9pm

For bookings:

info@masonicarms.co.uk
Tel. 01557 814 335
www.masonicarms.co.uk
10 Ann Street, DG7 2HU

#masonicarmsgof





ALL MAKES OF TYRES SUPPLIED & FITTED 4 WHEEL ALIGNMENT

Through our network of suppliers we offer our commercial customers emergency cover throughout the UK and EUROPE. Members of ITDN, BANDVULC, HANKOOK TRUCKMASTER, TRUCKPOINT and INFLEET.

We also cater for most lease companies and motobility vehicles.

- **All makes of tyres supplied and fitted**
- **Car, Commercial, Agricultural, Motorcycle
Fleet enquiries welcome**
- **We also fit - Batteries, Brakes, Exhausts,
Shock Absorbers and carry out
2 & 4 wheel digital alignment.**



Tyres with the personal touch

Call us on: 01556 503 777

Oakwell Road, Castle Douglas DG7 1JY
www.castledouglastyres.com stewartrytyres@btconnect.com

24 hour emergency service
Phone 07715371100