

Galloway Preservation Society

The Changing Face of Gatehouse

Margaret Wright

Mill on the Fleet
23 April 2022



View of Gatehouse
by Robert George
Kelly. 1852

The Changing Face of Gatehouse

How the town developed

- Planned by James Murray
- Access by Road and Sea
- Early Industries & Trades
- Water-Powered Mills Expand the Industrial Base
- Some of Those Who Built Gatehouse
- Differing House Styles in Different Streets
- Larger Houses had Colonial Pasts
- Competition from Steam-Powered Mills
- How the Population Grew and then Declined
- Some Properties have Remained Unchanged
- Some Properties have Altered
- Buildings have Disappeared
- Modern Buildings
- Tourism : More Cars and Holiday Homes
- Railway Came and Went. Bypass reduced congestion
- Personal transport & reduced population led to shop closures
- Gatehouse 50 Years Ago
- Gatehouse 50 Years From Now



James Murray of Broughton

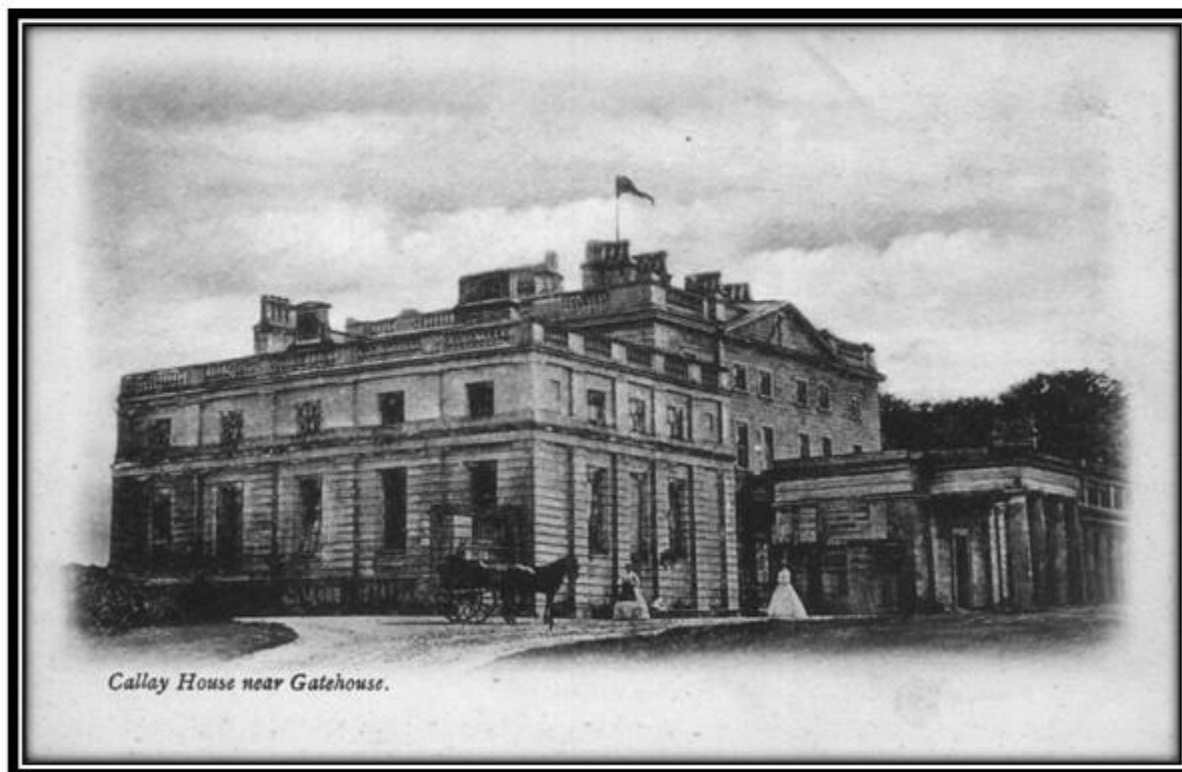
(1727 – 1799)

James Murray inherited Cally Estate in 1751.

He built Cally House in 1763.

He also laid out the planned settlement of Gatehouse in 1763 and began issuing feus in that year.

This painting of him is by Sir Joshua Reynolds.



Cally House near Gatehouse.

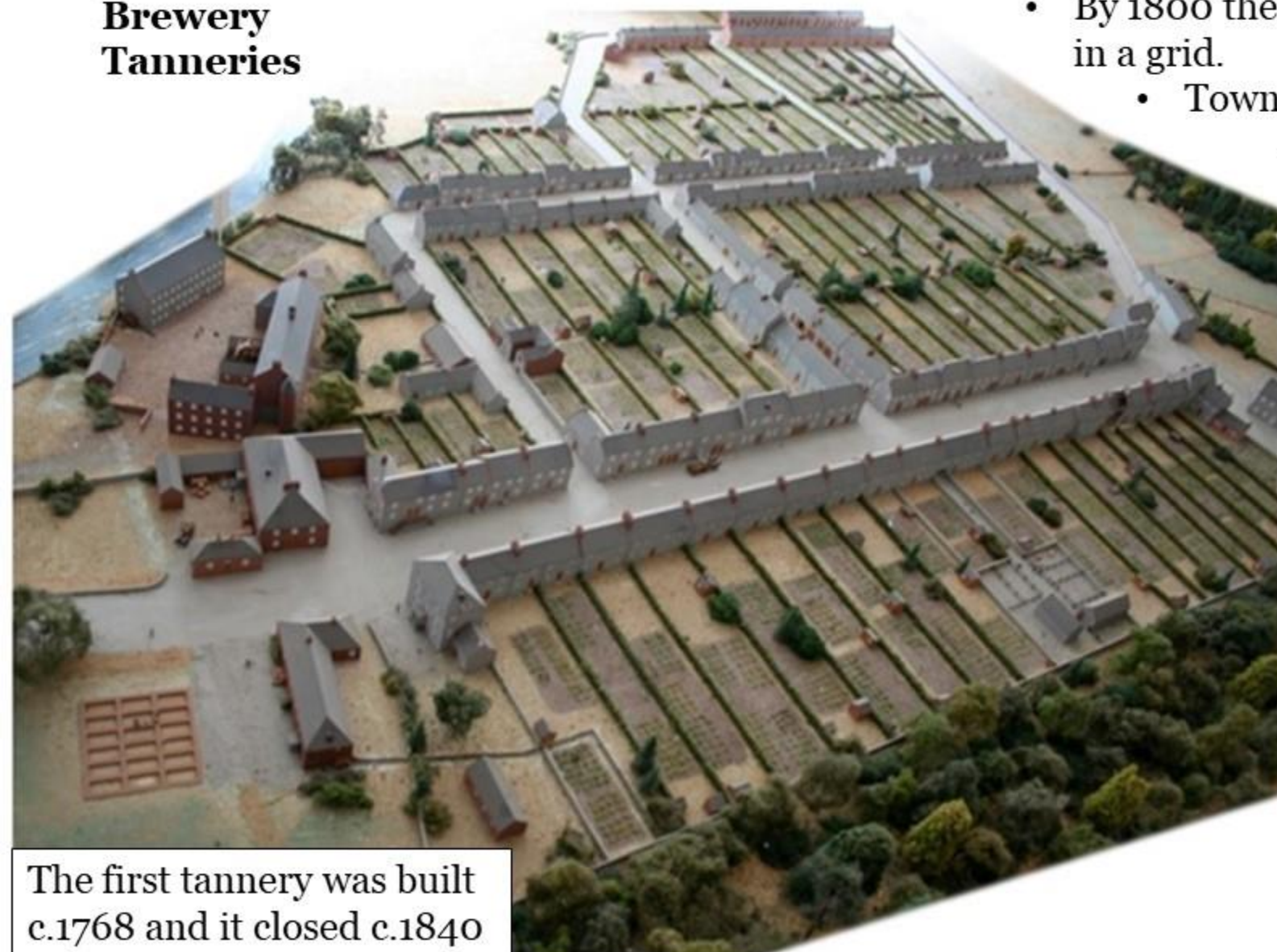
Cally House c.1900.
The portico entrance was
added in 1835

Early Industries

Mills
Brewery
Tanneries

The “Wee Toon” c.1800

- In 1760 Gatehouse did not exist
 - By 1800 the streets were laid out in a grid.
 - Town entered via Ann Street
 - Road to Cardoness Castle was complete.



The first tannery was built
c.1768 and it closed c.1840

Early Industries

The Old Brewery

Built c.1769

Closed c.1900



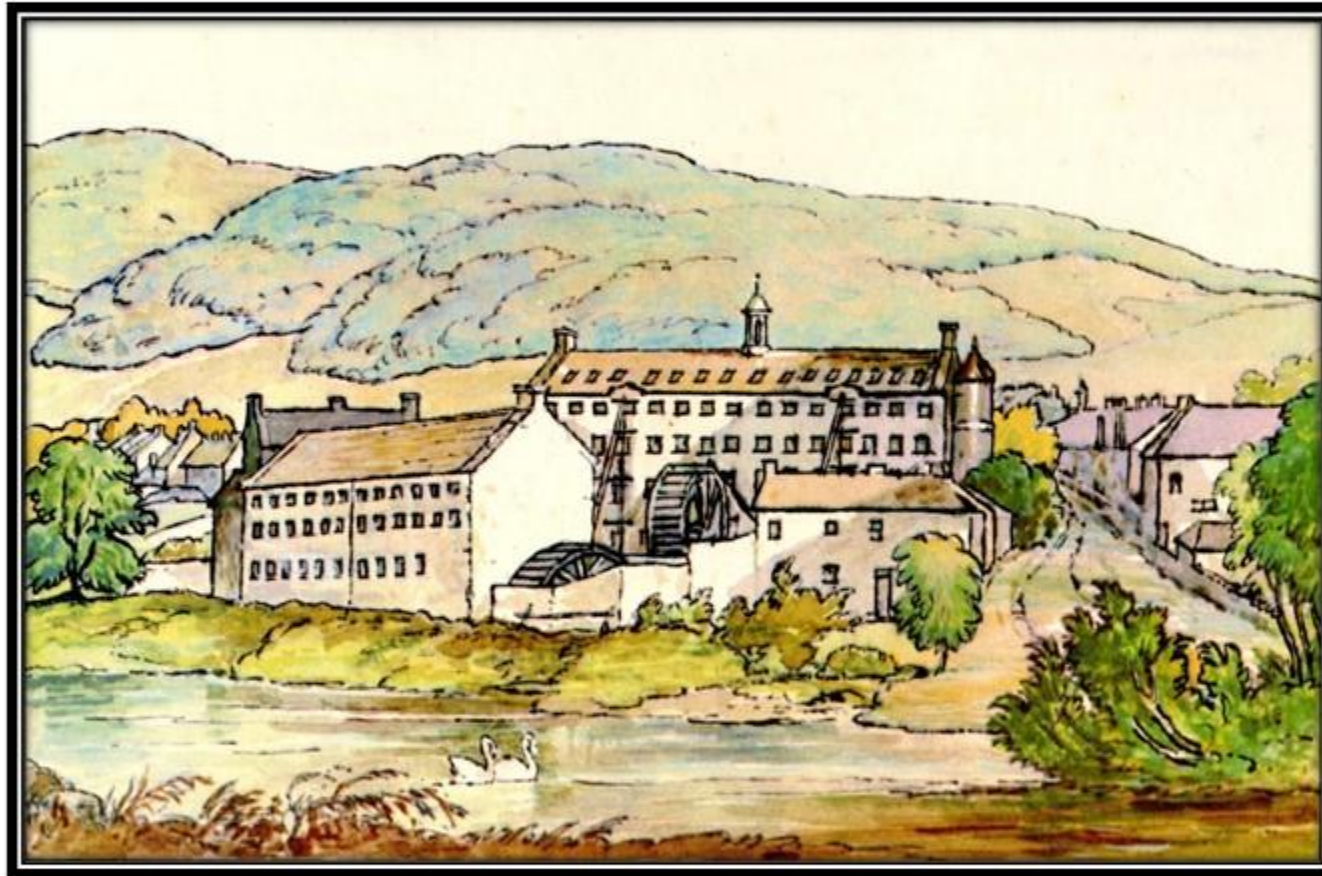
Aerial view
taken 1978



Flats at the Old Brewery
as seen from the north

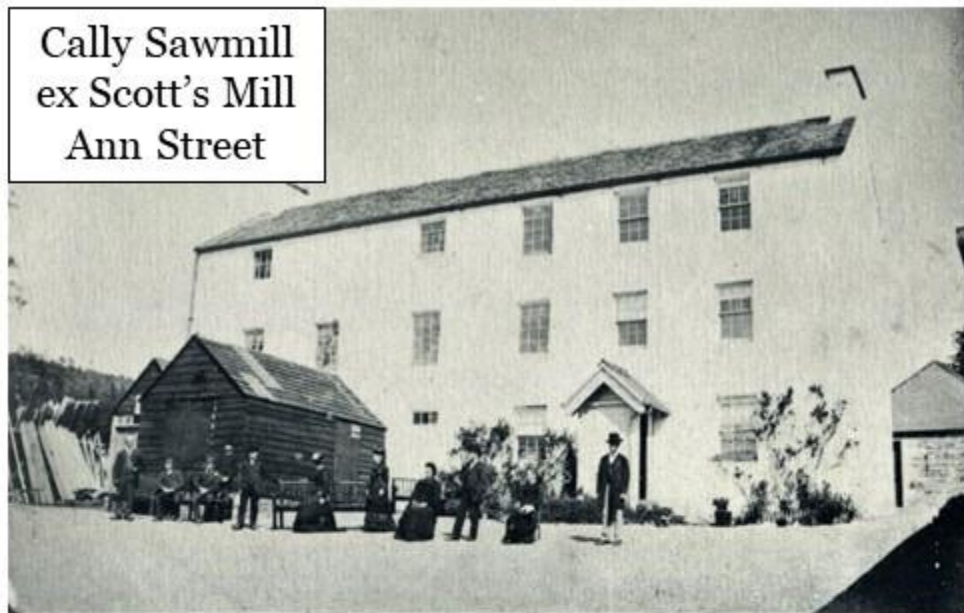
Early Industries

1785 Birtwhistle's Cotton Mill



James Murray contracted with the Birtwhistle family to build a Cotton Mill.
This created a significant number of new employment opportunities.

Cally Sawmill
ex Scott's Mill
Ann Street

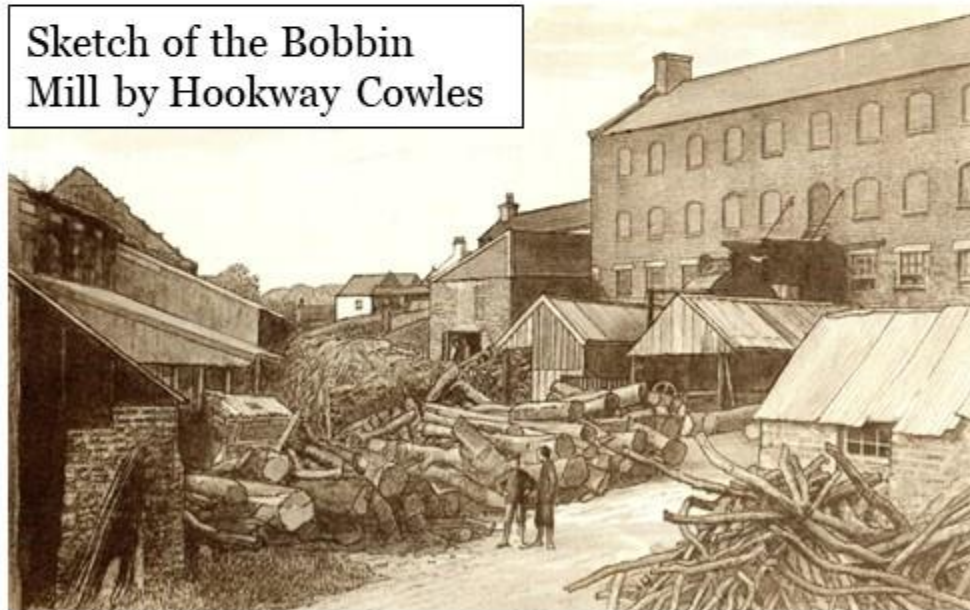


Water-Powered Mills



Scott's Mill halfpenny

Sketch of the Bobbin
Mill by Hookway Cowles



Other small mills operated for a short time e.g.

- Mr McWilliams Mill, adjacent to the Birtwhistle Mills.
- John Pape's Mill in Fleet Street

1813



Transport (shipping)

1824



1836



How did we find out who lived where ?

Main Sources

1. House deeds
2. Gravestones
3. Parish Records
4. Census Returns
5. Valuation Rolls

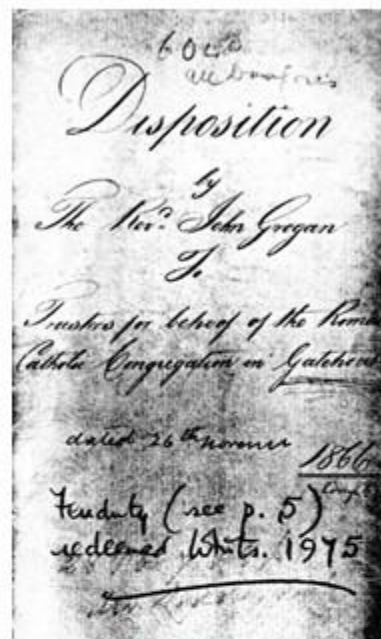
Further Info

1. Trade Directories
2. Newspapers
3. Magazines

HIGH STREET - GATEHOUSE-OF-FLEET

KIRKPATRICK - GATEHOUSE-OF-FLEET

Information Sources



Disposition to
Catholic Church
in 1866

10 Catherine Street

- Blue Bell Inn
- Upper floor
was Catholic Church,
now a home
- Ground floor is a home



gravestone

Erected by Mary Munro in loving memory of her parents, William Munro, **Blue Bell Inn**, Gatehouse-of-Fleet, born 7th July 1796, died 29th August 1846, and his wife Jane Thompson, born 7th January 1799, died 11th April 1852.

1841 Girthon Census

Back Street 2

1841 census

Surname	First Name	sex	age	occupation	birthplace
Munro	William	m	44	innkeeper	Scotland
Munro	Jane	f	42		Kirkcudbrightshire
Munro	Annabella	f	14		Kirkcudbrightshire
Munro	Margaret	f	12		Kirkcudbrightshire
Munro	Jessie	f	8		Kirkcudbrightshire
Munro	Mary	f	6		Kirkcudbrightshire
Munro	William	m	3		Kirkcudbrightshire
Munro	Hectorina	f	1		Kirkcudbrightshire

newspaper : marriage

DUMFRIES AND GALLOWAY STANDARD AND ADVERTISER, JULY 16, 1845.

At Gatehouse, on the 11th inst., by the Rev. George Murray of Girthon, Alexander Douglas, of the Royal engineers, to Annabella, third daughter of Bailie Munro, Blue Bell Inn, there.

Differing House Styles in Gatehouse

High Street (aka Front St.)

- Most houses in pairs – different roof lines
- Owned by Shopkeepers & Tradesmen

Catherine Street (aka Back St.)

- Many houses rented

Birtwhistle Street & Swan Street

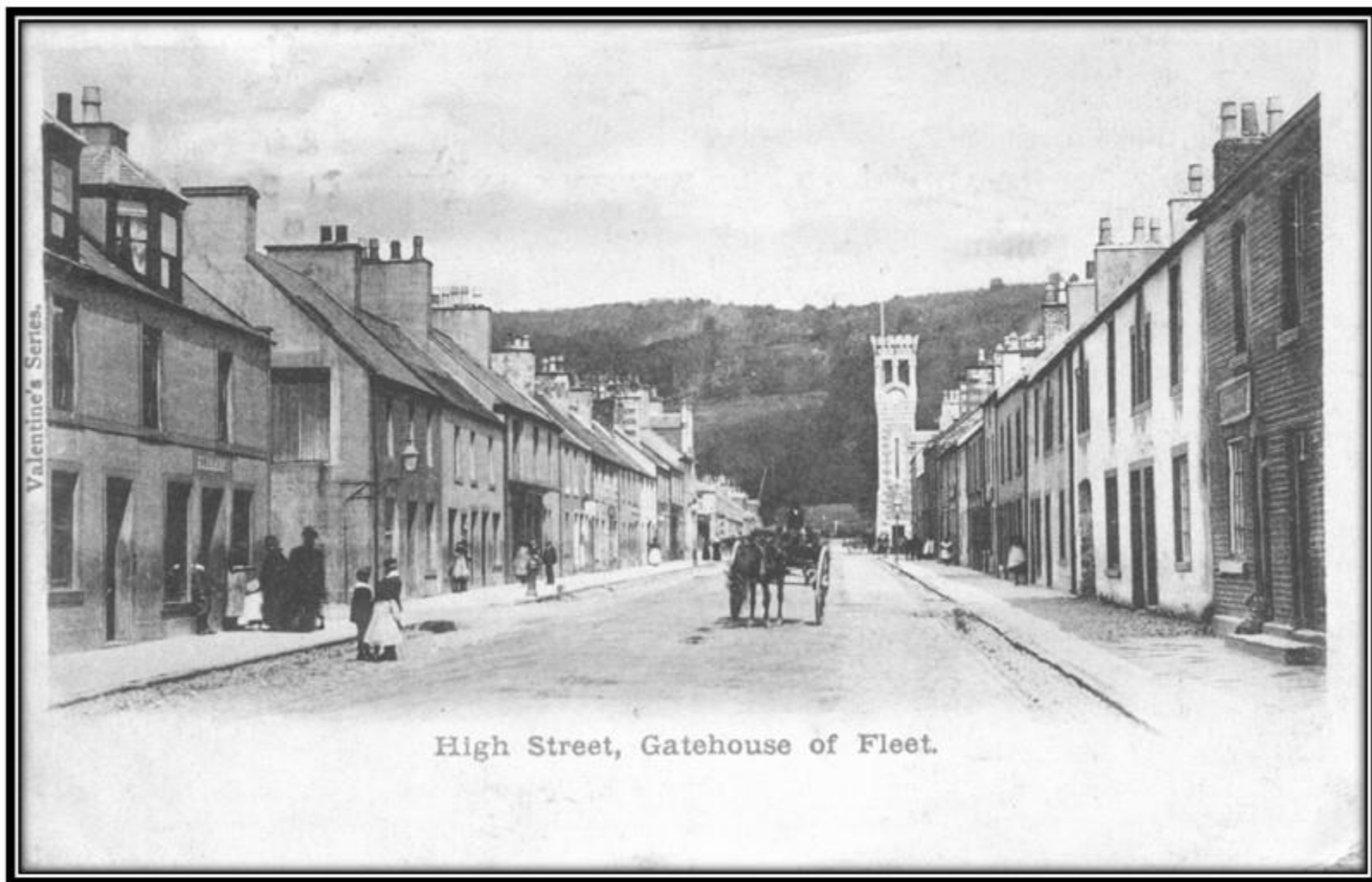
- Built by Birtwhistles to house their workers

Digby Street & Victoria Street (aka Cross St.)

- Trades (blacksmiths, builders, joiners etc.)



High Street c.1910



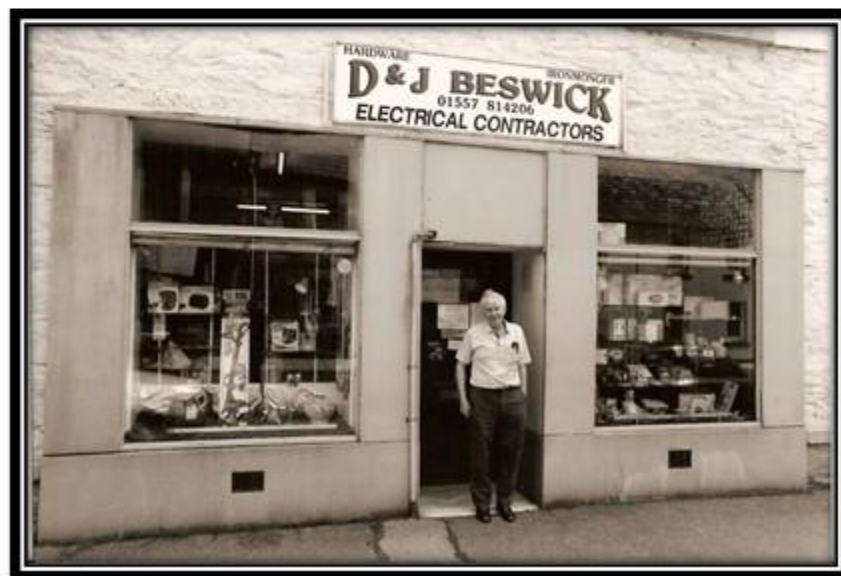
High Street feued between 1763 and 1788



Most buildings were feued in pairs, one as a house and the other as a business. The darker building is nos. 12 and 14 High Street. 14 was previously a butchers shop. The white building on the right, no.16, is one of the few single feus.

High Street Shops (1)

James Bain
Silver snuff box



High Street Shops (2) Chemist



Apothecaries Hall



Stark Chemist



John Hall



Now Boots

High Street Shops (3)

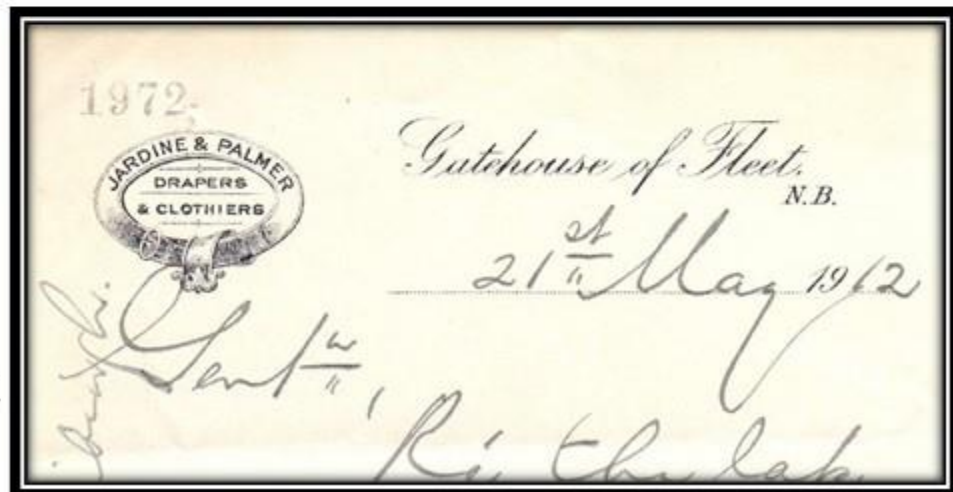
27-29 High Street



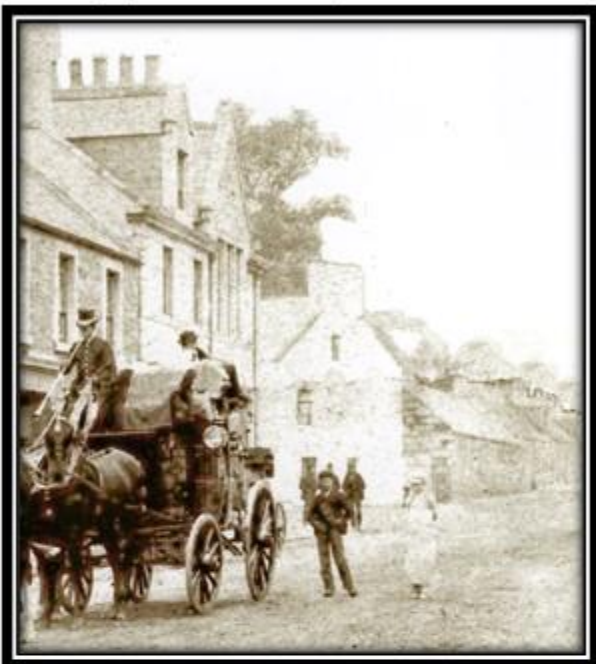
6 tailors working in a room
at rear of 31 High Street



Jardine & Palmer family



Jardine &
Palmer headed
notepaper



Evolving Gatehouse Hendersons

Left – before shop frontage

Below – Grocer's Shop

Right – “Lunky Hole” Gift Shop

has also been a “Co-op”
is now “The Scone Kitchen”






Joiner's workshop (c.1910)




Private residence (2014)

The Bay Horse – no.9 Ann St. was a public house in 1861 census



Bay Horse
ANTIQUES
GATEHOUSE OF FLEET telephone 461



WHY NOT SPEND A LEISURLY HOUR BROWSING
THROUGH THE PAST AND PRESENT IN THE
STABLES OF THE OLD BAY HORSE 1767
THEN REST A WHILE IN OUR

COFFEE GALLERY
WHERE YOU CAN VIEW AND BUY ANY OF OUR
PAINTINGS AND PRINTS ON SHOW

Good Quality Furniture, Porcelain, Paintings, Etc.
Purchased at High Prices

OPEN DAILY INCLUDING SUNDAY FROM
10 a.m. - 5 p.m.

Antiques Shop 1973

The Bay Horse

**Bed & Breakfast
Accommodation**



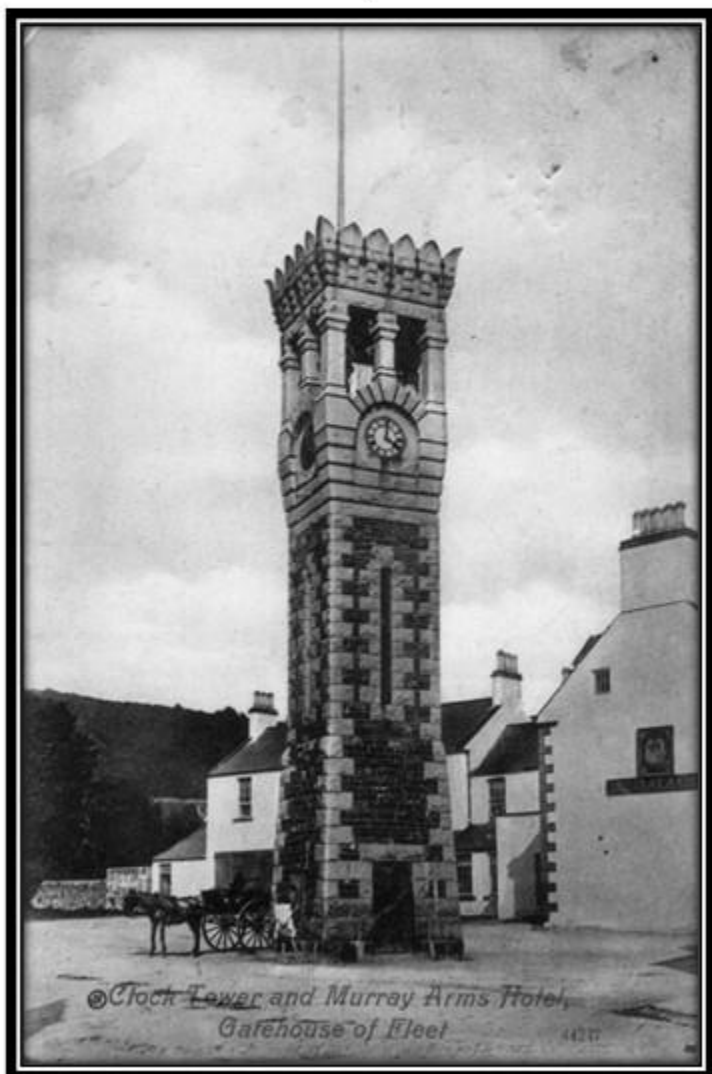
An 18th century listed building situated
in Gatehouse of Fleet's historical Ann
Street, surrounded by parkland and oak
woods. Choice of nearby hotel bars,
restaurants and pub.
All luxury facilities including central
heating, TV and en-suite bedrooms.
Scottish Tourist Board – 3 Stars.

Proprietors: Charles and Carol Jackson
Tel: 01557 814073

Bed & Breakfast 2000

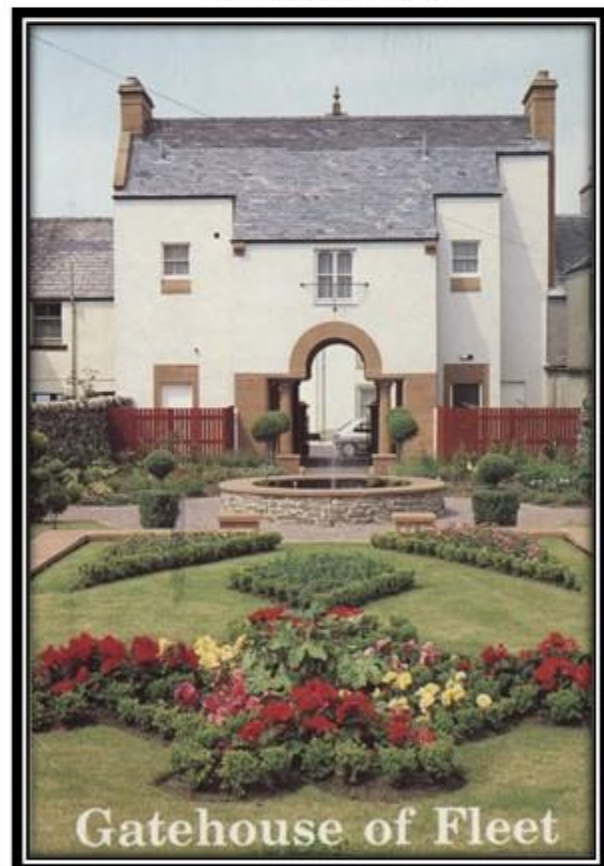
High Impact Buildings

Clock Tower, built 1871



Town Hall, built 1884.
Main building
demolished

Newly planted
Town Hall
Gardens, 1994





Catherine Street

West End showing 40-42,
now demolished

East End showing 1-7,
now demolished



A Change for the Better

The Hermitage, corner of
Old Ford Lane & Swan Street



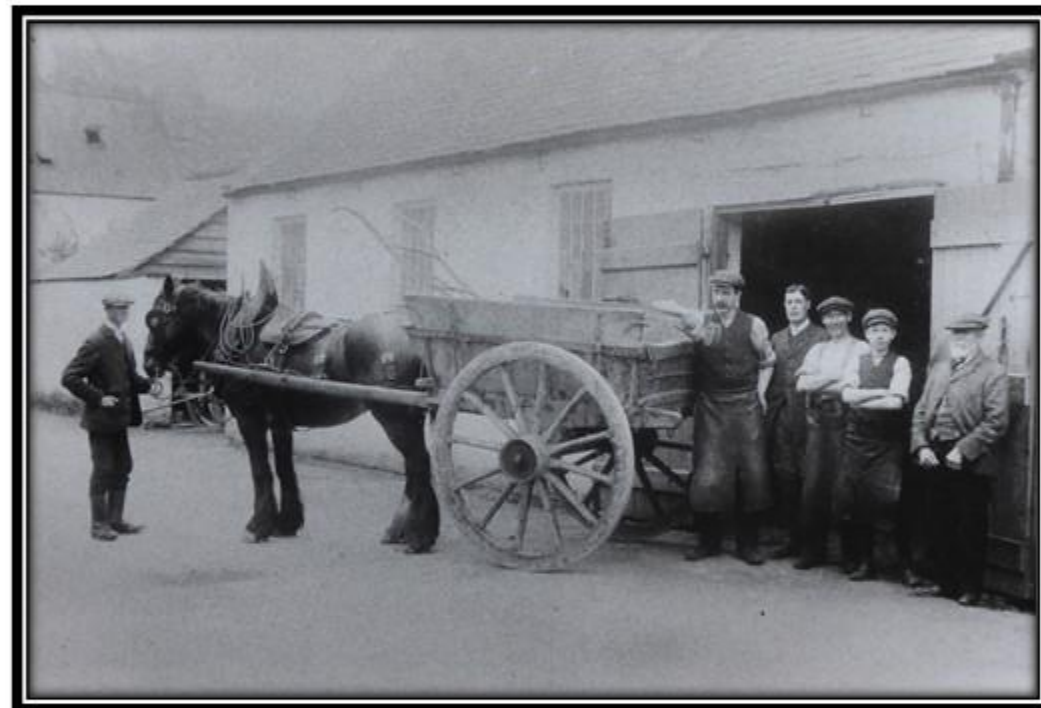
Businesses that have Disappeared

Blacksmiths



MacDonald's, Digby St. c.1900

now a holiday home



Anderson's, Victoria St. c. 1920s

now a home, The Smithy

Horatio Square



Rosebank (now Cheritonwood)



Owners with Colonial Connections (1)



Roseville, Ann Street



Angel Hotel

Owners with Colonial Connections (2)



East & West Neilson



Left is 'Back Neilson' before demolition



Fleetbank

1841 Census

Neilson Square was occupied by
6 families, 11 people.

Back Neilson had
13 families 60 people

Gatehouse Builders - Hume



Alderlea



Elderslie (now Glenlea)



Lath inscription from Glenlea which says
"This House was built in the year 1850 and also was Mr Hume's"

Gatehouse Builders - Hornsby

Moravia, 29 Fleet Street



37 Catherine Street
aka Hornsby Hall

Problems Facing Industrial Development

- **Financial**

- Failure of Bank of Ayr (1772)

- many shareholders from Gatehouse

- **Trouble at t'mill**

- End of water-powered cotton boom

- Birtwhistle Mill closed (1810)

- Scott's Mill closed (1811)

- Lower Birtwhistle Mill re-opened as cotton mill by
James Davidson (1832-1850)

- Mill Fires : Cotton Mill (1840), Bobbin Mill (1919)

- **Shipping Improvements**

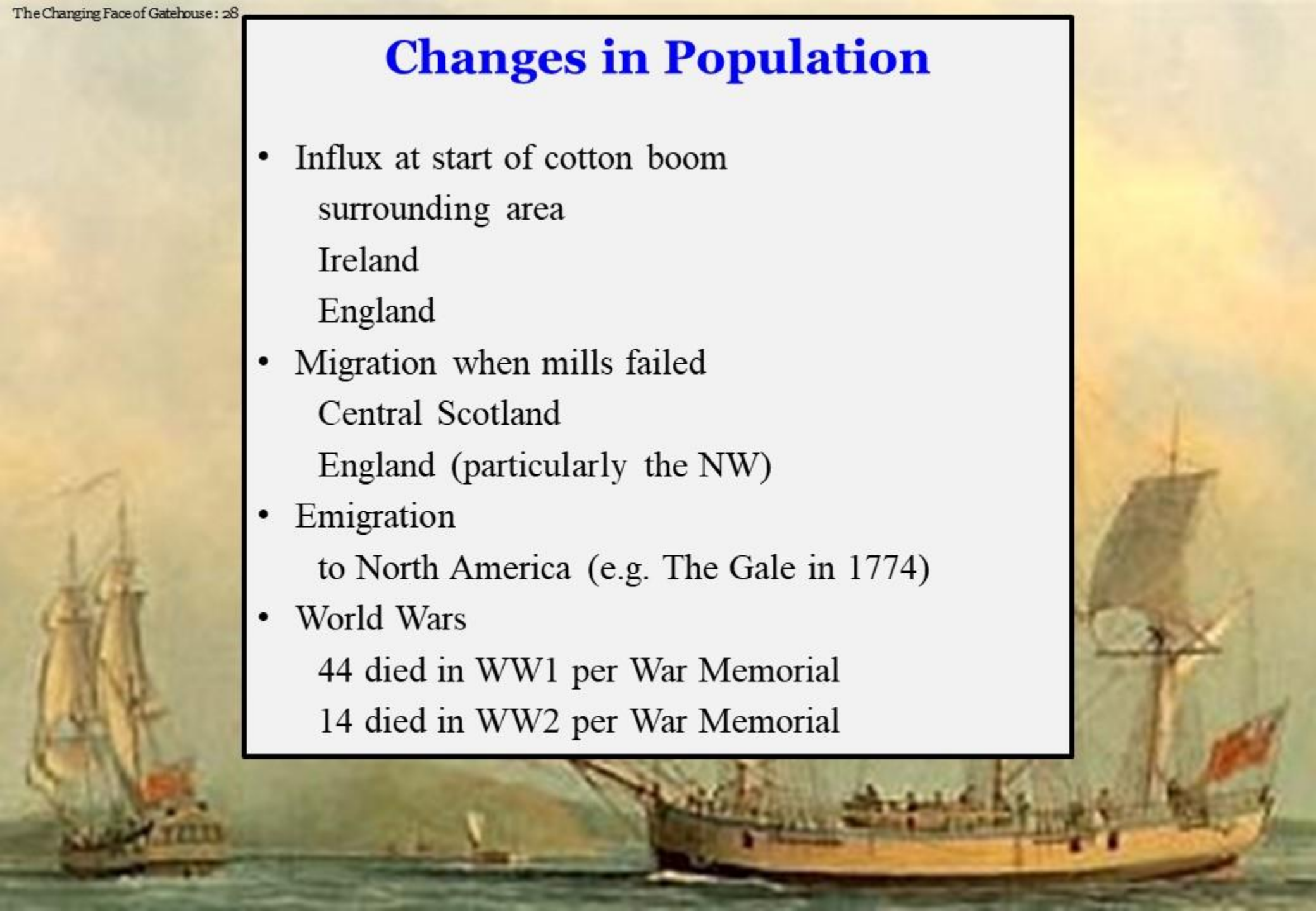
- Too little too late

- **Transportation**

- Railway arrived (c.1861) but station 6 miles away

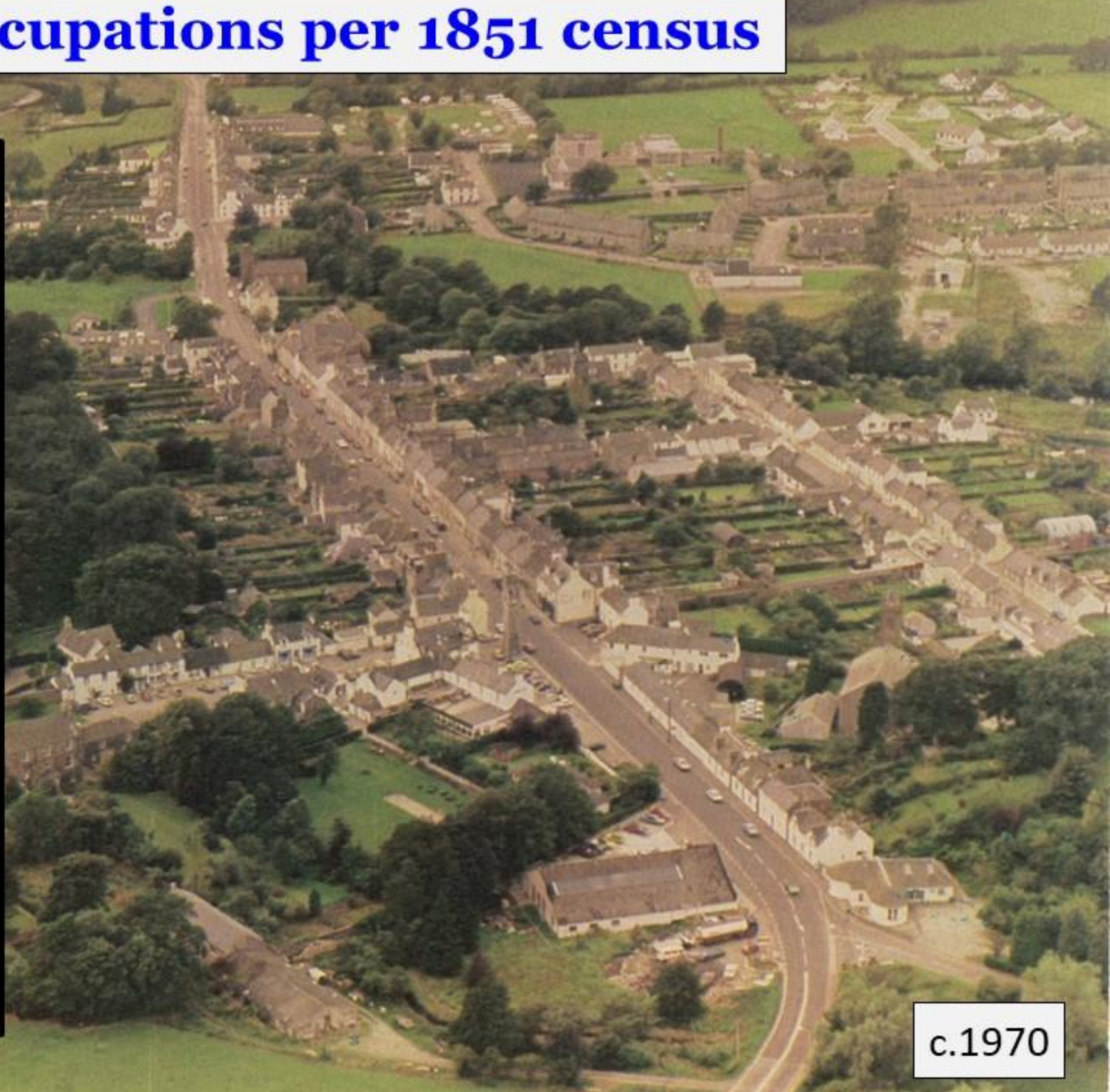
Changes in Population

- Influx at start of cotton boom
surrounding area
Ireland
England
- Migration when mills failed
Central Scotland
England (particularly the NW)
- Emigration
to North America (e.g. The Gale in 1774)
- World Wars
44 died in WW1 per War Memorial
14 died in WW2 per War Memorial



Occupations per 1851 census

Hairdresser / barber
78 weavers
19 dressmakers
16 seamstresses
17 boot &
shoemakers
16 grocers
12 masons
4 bricklayers
8 blacksmiths
1 tinsmith
5 inn-keepers
5 spirit dealers
6 joiners



c.1970

Disappearing Occupations

Rabbit Catcher
Mole Catcher
Blacksmith
Tanner
Ostler
Copper Miners
Sieviewright
Cartwright
Mill Mechanic



"Rabbit Catches" by John Faed

Dressmaker
Bobbin Turner
Cotton Weaver
Basket Maker
Seamstress
Hoop Maker
Laundress
Pirn Winder
Carder
Dyer

Disappearing Businesses



The sign above the door at
53 High Street once read
“J McNEIL TAILOR”

uncovered 2020



The sign above the door at
24 Fleet Street once said
“J HYSLOP”

Newer Gatehouse Building

Originally Council Housing

- Market Hill
- Riverbank

Private Developments

- Baker's Dozen
- Beechwood
- Boreland Wood
- Bracken Wood
- Laurieston Road
- Mansewood
- Meadowside
- Planetree
- Ramsay Wood



Fleet Street, Gatehouse.

Access by Road



Pre-1921 : **The Cut**
opened in 1823



Early-1920s :
War Memorial
erected in 1921.

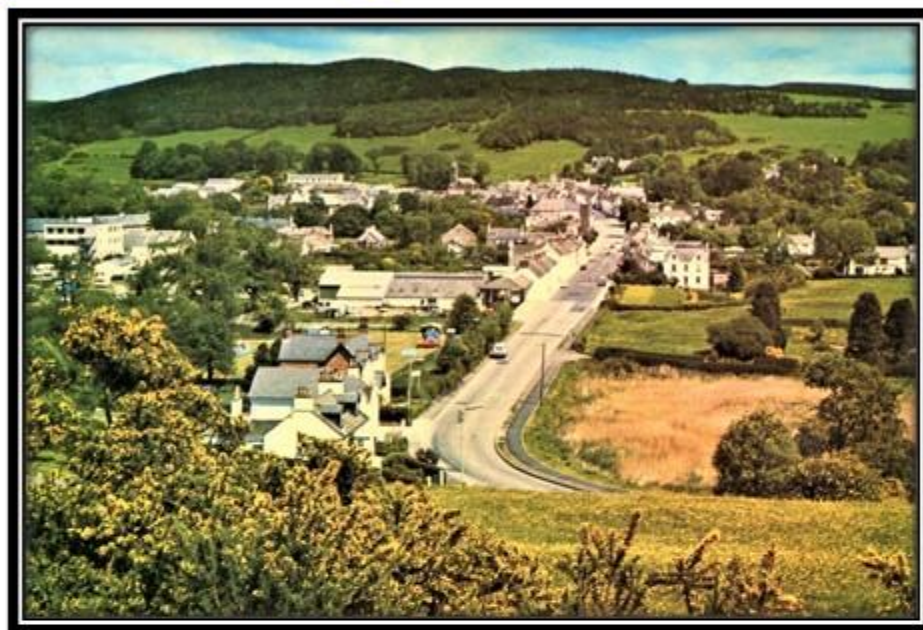


1986 : **Gatehouse Bypass** opened.
Less traffic in High Street.

Gasworks & Garages no longer exist



Fleetside School (left centre),
Gasworks (centre)
both demolished



Market Hill & New School
+ Campbell's Garage



Crosbie's Garage

Disappearing Gatehouse

Ann Street

Back Neilson

High Street

Town Hall

Catherine Street

Nos. 1 to 7 (east end)

Nos. 40 & 42 (top of Digby Street)

Garden Street

No. 2 (next to Fleetbank)

North View (health centre)

north side (community centre)

Fleet Street

Gasworks

Campbell's Garage

(now Fleet Valley Care Home)

Woodside

Crosbie's Garage

Castramont Road

Fleet Farm building demolished
(now Stelage Court)

Birtwhistle Street

Parts demolished and incorporated
into larger houses :-

East View, West View & Woodlyn

Digby Street

Nos.12-18 replaced by council houses
(now 4 private homes)

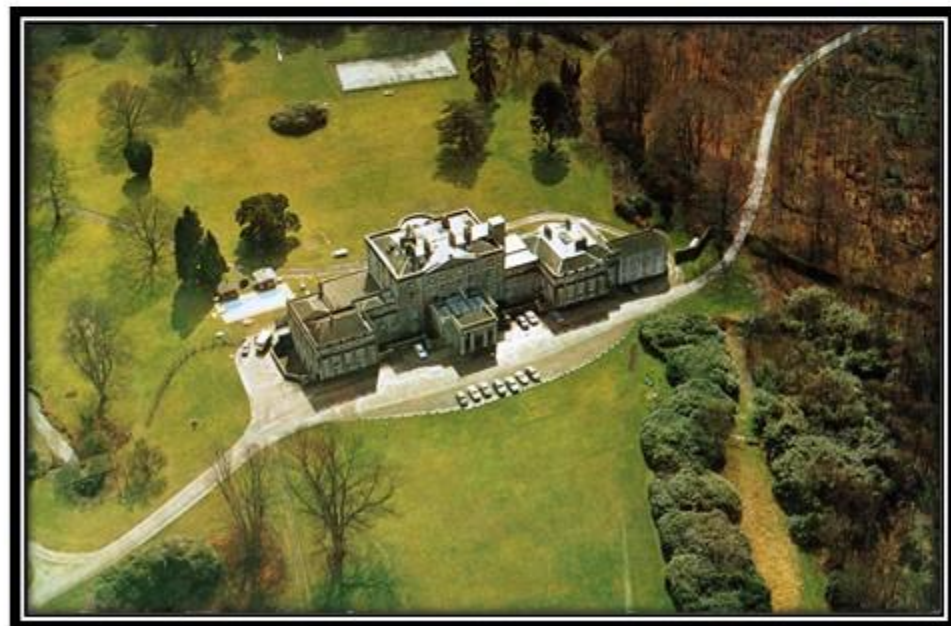
Smiddy – now a holiday home

Victoria Street

Smithy – now a home



Tourism



Shops in the 1960s

Hairdresser / Barber

4 Grocers

2 Butchers

Fish Shop

Baker

Dairy

Ice Cream etc.

Confectioners

2 Drapers

Shoe Shop

Newsagent

2 Banks

Post Office

High Street, Gatehouse.

The Changing Face of Gatehouse

The town has changed over 250 years

- From a hamlet to a planned industrial village with a steep rise in population.
- Water powered industries could not compete with steam power.
- Isolation and poor transport led to industrial demise.

- Physical size remained stable until mid 1930s, although population decreased.
- Some buildings underwent a change of use and some were demolished.
- The town expanded providing new housing.
- Sea and rail came and went. Roads completely changed access.
- Holiday lets and second homes affect the year round population and need for shops.
- Modern shopping has changed with the private car and now internet sales.
- Problems caused by parked cars and by recycling.
- Homes need to be sustainable (green) yet retain character of the town.

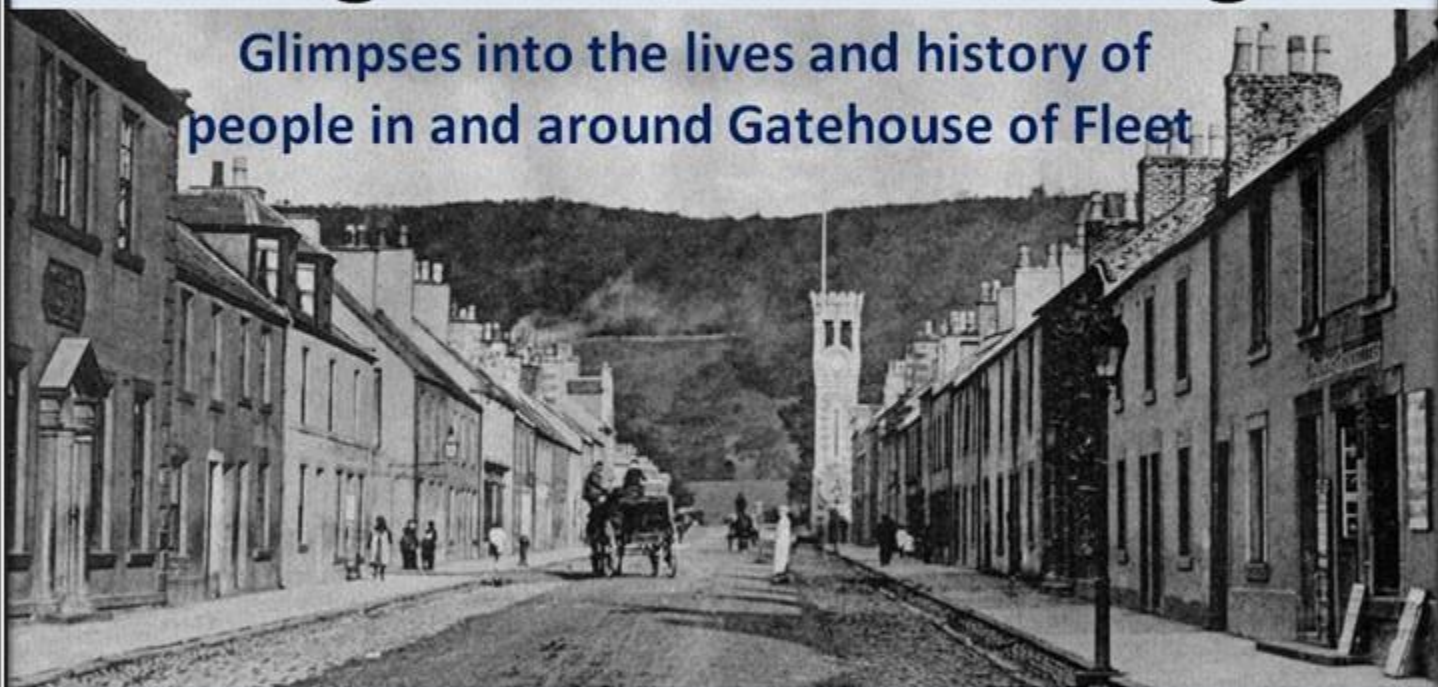
**We need to preserve the best of
Gatehouse for future generations**



Find out more

www.gatehouse-folk.org.uk

Glimpses into the lives and history of
people in and around Gatehouse of Fleet



Graham and Margaret Wright

4 Victoria Street, Gatehouse of Fleet, DG7 2HT

01557-815022