

Walton

Edward Arthur

1860 - 1922

His Life

Edward Arthur Walton was born at Glenderston House, Barrhead, Renfrewshire on 15th April 1860. He was one of twelve children. Some of his siblings became well known in artistic professions. His father was Jackson Walton, who was a partner in a sawmill when Edward was born. Jackson was born in England in 1801 and died in 1873. He painted and took photographs in his spare time. Edward's mother was Eliza Anne Nicolson (born 1825 Dundee). Jackson and Eliza married in 1844 in Aberdeen.

Edward trained at Glasgow School of Art and also in Düsseldorf. He later travelled to Spain and Belgium. In 1883 he produced a number of watercolours of Helensburgh.

Edward married Helen Urie Law née Henderson in 1890 in Glasgow. She was born in Paisley in 1859 and died in 1945. She had previously been married to Thomas Law (1846 - 1881) but was widowed. She had a daughter Lilian May Law from her first marriage, who Edward accepted into his family and remembered in his will. Before her marriage, Helen had been an artist.

Between 1894 and 1904 the Walton's lived in Chelsea, London. Daughter Cecile was born in Glasgow but John, Arthur and Margery were all born in London. In the 1901 census they were in Chelsea and Edward is listed as an artist/painter. All the Walton children did well in their chosen professions later in life.

Whilst living in London, Edward enjoyed painting landscapes in Suffolk. He was also a talented portrait painter. The family returned to live in Edinburgh in 1904.

During the First World War, when painting trips to the continent were impossible, Edward discovered Galloway. He first visited New Abbey and New Galloway and continued to visit the area after the war. In 1921 he and his wife Helen rented Durweston in Ann Street, Gatehouse for several months and had a number of artistic friends visit them, including their artist daughter Cecile.

Edward painted a number of pictures in the area including 'A Gate by a Farm' and 'Smithy at the Crossroads'. The last picture that he is known to have painted was 'The Clocktower, Gatehouse of Fleet'. This is a view from Garries Park looking towards the Town Clock. It is said that this picture was still on his easel, and unfinished, when he died.

E. A. Walton died on 18th March 1922 in Edinburgh. He is buried in Dean Cemetery, Edinburgh alongside his wife Helen, who died in 1945.



His Work

Try following the links to find examples of this artist's work.. When you have viewed the contents, remember to use your browser's "back" button to return to this page.

[In the Artists Footsteps](#)

[National Galleries Scotland](#)

[MutualArt](#)

[ArtNet](#)

Here are 2 youtube videos which show E A Walton's work.

[Video1](#)

[Video2](#)



In the Artists' Footsteps

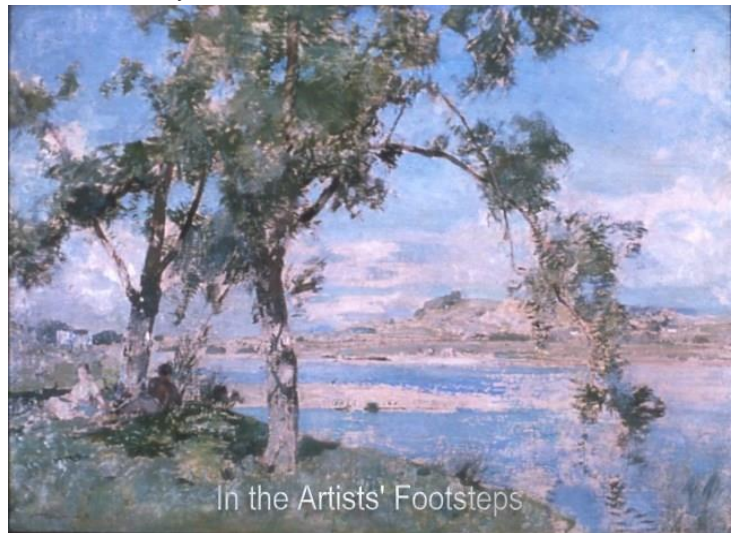
A Gate by a Farm, Galloway



A Daydream (ex National Galleries Scotland)



The Black Bull (ex National Galleries Scotland)



In the Artists' Footsteps

The Gates of Galloway



Self Portrait



The Clocktower, Gatehouse of Fleet